



EL CERRITO TRAILS SIGNAGE PLAN

Wayfinding Concepts | July 2016 | REVISED DRAFT

Acknowledgements

PROJECT PARTNERS

The El Cerrito Trails Signage Plan represents a collaborative effort between the City of El Cerrito and the El Cerrito Trail Trekkers, with technical assistance provided by the National Park Service's Rivers, Trails, and Conservation Assistance (RTCA) program.



Contents

PLAN OVERVIEW	5
COLOR PALETTE AND TYPOGRAPHY	7
HILLSIDE NATURAL AREA SIGNS	9
• S1 GATEWAY KIOSK CONCEPT	9
• S2 TRAIL ENTRY SIGN CONCEPT	13
• S3 TRAIL DIRECTIONAL MARKER CONCEPT	17
• S4 STREET DIRECTIONAL SIGN CONCEPT	33
OTHER CITYWIDE TRAIL AND PATH SIGNS	43
REFERENCES	61
APPENDIX: COST ESTIMATION	63

Plan Overview

The El Cerrito Trails Signage Plan provides a framework for the design and development of wayfinding signage for the City of El Cerrito's network of public trails, pathways, and stairs. The concepts presented in this plan are intended to serve as a resource to guide the city in the establishment of trail signage that complements, and integrates with, existing citywide signage and wayfinding programs. In particular, the designs attempt to relate—in color and form expression—to city graphic standards detailed in *The City of El Cerrito Signage & Wayfinding Program, Graphic Standards Manual* (Release 1.0 / 07.14.2008).

While existing wayfinding programs detail signage standards for the city's urban areas, including citywide walking and bicycling routes, this plan focuses on the city's network of off-street trails and little-known street-connectors. The purpose for establishing a wayfinding signage plan in these areas is to:

- Increase visibility, access, and use of the city's existing network of trails, pathways, and stairs
- Improve connectivity between identified citywide bicycle and pedestrian routes, key community destinations, and existing trails
- Enhance wayfinding and improve trail user safety
- Advance city goals to promote walkability and enhance the quality of life for its residents

The primary audience for these signs is non-motorized trail users (e.g. walkers, hikers, off-road bicyclists, etc.).

PROJECT LOCATION

The project planning area encompasses the City of El Cerrito, focusing on areas with identified existing public trails and pathways. Specifically, the plan concentrates on the Hillside Natural Area, given the extent of trails

located in this area and its popularity with users. Concepts for signage outside of the Hillside Natural Area were also developed to illustrate how the sign program may be applied within the broader urban context.

SIGN TYPES

Four sign types were developed for the El Cerrito Trails Signage Plan, each servicing a distinct function which, collectively, forms a comprehensive wayfinding signage program for the city's public trails and pathways.

The **Gateway Kiosk** sign concept, indicated by the "S1" prefix, represents the largest sign concept and includes a detailed information panel placed at primary trailhead locations (aka "Gateways"). It serves as a visual cue for trail users entering a park site and provides a detailed map of the area as well as trail route information and use guidelines.

The **Trail Entry** sign concept, indicated by the "S2" prefix, is intended to be placed at secondary trail access and entry points. Though smaller than the S1 Kiosk sign, the S2 Trail Entry sign still provides a detailed map for trail users with basic orientation and use guidelines.

The **Trail Directional Marker** concept, indicated by the "S3" prefix, is the primary wayfinding sign type developed for use at key trail junctions and intersections. The S3 Trail Directional Markers are best suited for off-street, natural surface conditions and/or locations where a lower-profile sign type is desired.

The **Street Directional** sign concept, indicated by the "S4" prefix, provides a pedestrian-scale sign type that can be applied within the city's more urbanized areas and adjacent to street rights-of-way* in order to direct users to nearby trail entry points and/or other community resources.

MODIFIED SIGNS

Two of the developed sign types—S3 and S4—were further modified for use on trails and pathways located outside the Hillside Natural Area (see “Other Citywide Trail and Path Signs” section, p. 47).

These two modified signs were developed primarily to delineate the city’s stand-alone trail, stairway, and path segments. They have been labeled in this document with an “O” prefix to indicate their intended use outside of the Hillside Natural Area. In addition, the modified S3 and S4 signs feature a logo header titled “El Cerrito Paths and Trails” instead of “Hillside Natural Area.”

The signs do not replace the city’s existing and planned on-street bike and pedestrian wayfinding programs. Rather, they provide identification for less-visible paths and trails that ties into the wayfinding plan developed for the larger Hillside Natural Area. Where appropriate, these signs direct users to specific destinations and other park areas but are not intended to serve as trail maps for the city’s parks themselves; no S1 or S2 signs were developed for any locations outside of the Hillside Natural Area as part of this plan.

SIGN PLACEMENT

The placement and location of signs detailed in the El Cerrito Trails Signage Plan is approximate and intended primarily to illustrate general wayfinding concepts. Final sign placement will be subject to field verification and specific site conditions.

Where appropriate, some of the signs may be mounted to existing sign posts, in particular the S2 Trail Entry and S4 Street Directional sign types. Opportunities to take advantage of existing sign post infrastructure should be verified and confirmed with the appropriate city departments.

SIGN MATERIALS

The materials indicated in this sign plan were identified to balance durability with character. A key consideration in the design was to highlight and reflect the natural settings in which many of these signs are intended to be placed.

As such, unpainted cedar wood posts have been chosen to provide a natural, rustic feel to the signs located at trailheads and along natural surface pathways. As an alternate, powder-coated aluminum posts and frames can also be utilized to great effect in these areas.

The informational display panels at the main Gateway Kiosks are fabricated from ½” thick high pressure laminate (or similar) to provide maximum durability against sun exposure, scratching, fading, and graffiti. The high pressure laminate material is commonly used in this type of application and setting and is usually backed by a 10 year warranty.

The Gateway Kiosk includes a decorative nameplate as a design element to mark and provide a unique identifier to the area’s main trailhead locations. The nameplates are fabricated from Cor-Ten steel to match the city’s existing wayfinding signage material. As an alternate, the panel could be fabricated from powder coated aluminum.

All other sign panels depicted in this plan are fabricated from standard aluminum, providing durability and a lower cost for replacements and future additions to the wayfinding program.

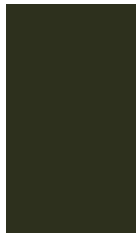
* The S4 Street Directional sign is not intended to provide wayfinding information to motorized vehicle operators. S4 signs located within street rights-of-way should be placed under the guidance of the City’s Public Works Department to adhere to all appropriate regulations.

Color Palette



Pantone
3025C

Color to match
existing city sign
program



Rich Black

60c
50m
75y
70k



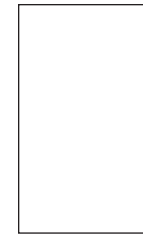
Gray

0c
0m
0y
70k



Warm Gray

21c
17m
23y
0k



White



Dark Red

40c
74m
96y
51k



Olive

6c
0m
47y
27k



Khaki

19c
16m
37y
0k



Cream

3c
3m
9y
0k

Typography

Myriad Pro

ABCDEFGHIJKLMNOPQRSTUVWXYZ

abcdefghijklmnopqrstuvwxyz

1234567890

S1 Gateway Kiosk Concept

Freestanding, upright double post informational display kiosk.
Located at primary trailheads / gateways.



NAMEPLATE

30" x 18" (tapered to 7.5") decorative nameplate with Hillside Natural Area logo (illustrative, city logo variation)

1/4" Corten steel with laser cut lettering and logo, bracket mounted to posts

ALTERNATE: Powder coated aluminum panel

POSTS

6" x 6" cedar wood posts (unpainted)

ALTERNATE: Powder coated aluminum posts

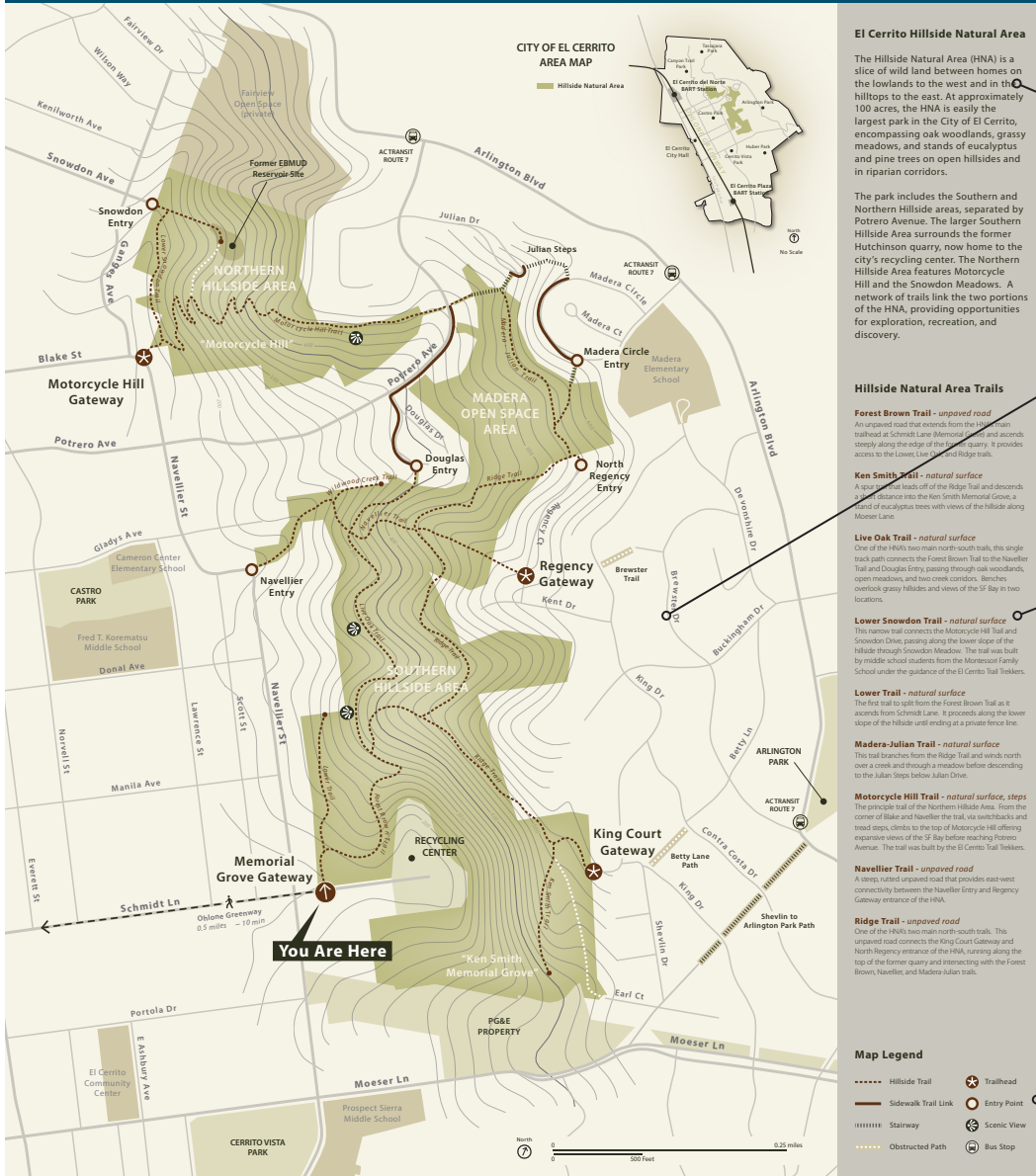
KIOSK PANEL

30" x 40" informational display panel

1/2" thick high pressure laminate (or similar), bracket mounted to posts

MEMORIAL GROVE GATEWAY

S1 Gateway Panel Details



El Cerrito Hillside Natural Area

The Hillside Natural Area (HNA) is a slice of wild land between homes on the lowlands to the west and in the hilltops to the east. At approximately 100 acres, the HNA is easily the largest park in the City of El Cerrito, encompassing oak woodlands, grassy meadows, and stands of eucalyptus and pine trees on open hillsides and in riparian corridors.

The park includes the Southern and Northern Hillside areas, separated by Potrero Avenue. The larger Southern Hillside Area surrounds the former Hutchinson quarry, now home to the city's recycling center. The Northern Hillside Area features Motorcycle Hill and the Snowdon Meadows. A network of trails link the two portions of the HNA, providing opportunities for exploration, recreation, and discovery.

Hillside Natural Area Trails

Forest Brown Trail - unpaved road
An unpaved road trail extends from the upper trailhead at Schmidt Lane Memorial Grove and ascends steeply along the edge of the former quarry. It provides access to the Lower Live Oak Ridge trails.

Ken Smith Trail - natural surface
A paved trail leads off of the Ridge Trail and descends a short distance into the Ken Smith Memorial Grove, a stand of eucalyptus trees with views of the hillside along Mower Lane.

Live Oak Trail - natural surface
One of the main north-south trails, this single track path connects the Forest Brown Trail to the Navellier Trail and Douglas Entry, passing through oak woodlands, open meadows, and two creek corridors. Benches overlook grassy hillsides and views of the S1 Bay in two locations.

Lower Snowdon Trail - natural surface
The narrow trail connects the Motorcycle Hill Trail and Snowdon Drive, passing along the lower slope of the hillside through Snowdon Meadows. The trail was built by middle school students from the Morsewood Family School under the guidance of the El Cerrito Trail Trekkers.

Lower Trail - natural surface
The first trail to split from the Forest Brown Trail as it ascends from Schmidt Lane. It proceeds along the lower slope of the hillside until ending at a private fence line.

Madera-Julian Trail - natural surface
The trail branches from the Ridge Trail and winds north over a creek and through a meadow before descending to the Julian Steps below Julian Drive.

Motorcycle Hill Trail - natural surface, steps
The principle trail of the Northern Hillside Area. From the corner of Blake and Navellier the trail, via switchbacks and tread steps, climbs to the top of Motorcycle Hill offering expansive views of the S1 Bay before reaching Potrero Avenue. The trail was built by the El Cerrito Trail Trekkers.

Navellier Trail - unpaved road
A steep, rutted unpaved road that provides east-west connectivity between the Navellier Entry and Regency Gateway entrance of the HNA.

Ridge Trail - unpaved road
One of the HNA's main north-south trails. This unpaved road connects the King Court Gateway and North Regency entrance of the HNA, running along the top of the former quarry and intersecting with the Forest Brown, Navellier, and Madera-Julian trails.

Map Legend

- Hillside Trail
- Sidewalk Trail Link
- Stairway
- Obstructed Path
- Trailhead
- Entry Point
- Scenic View
- Bus Stop

Gateway trailhead namebar / identifier

Hillside Natural Area description and general information

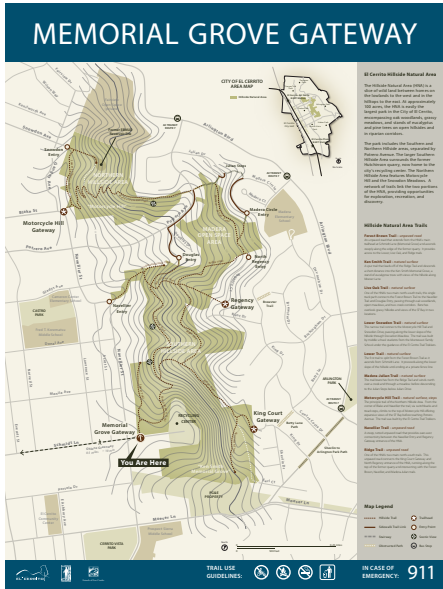
Orientation map of entire Hillside Natural Area, including "You Are Here" locator arrow and City of El Cerrito Area Map

Hillside Nature Area trail route information and details

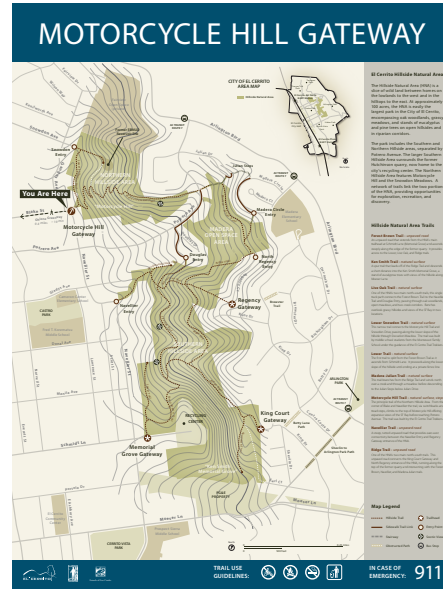
Map legend and trail features

Regulatory band featuring agency / partner logos, basic trail use guideline symbols, and emergency contact information

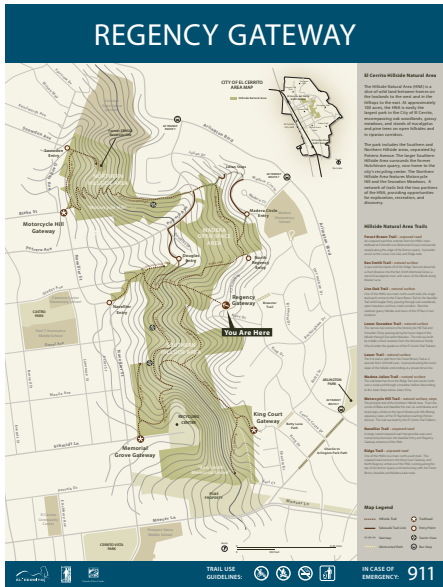
S1 Gateway Kiosk Locations



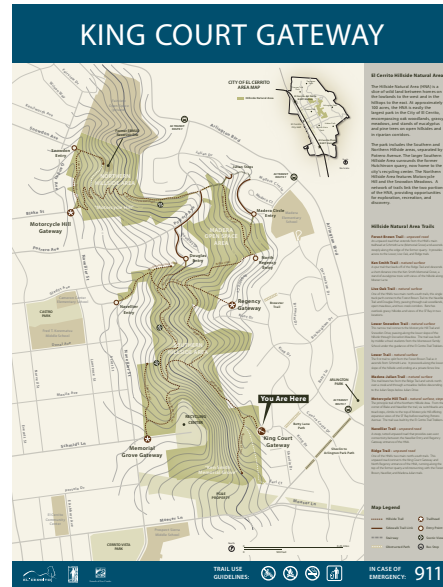
S1-1 Memorial Grove Gateway



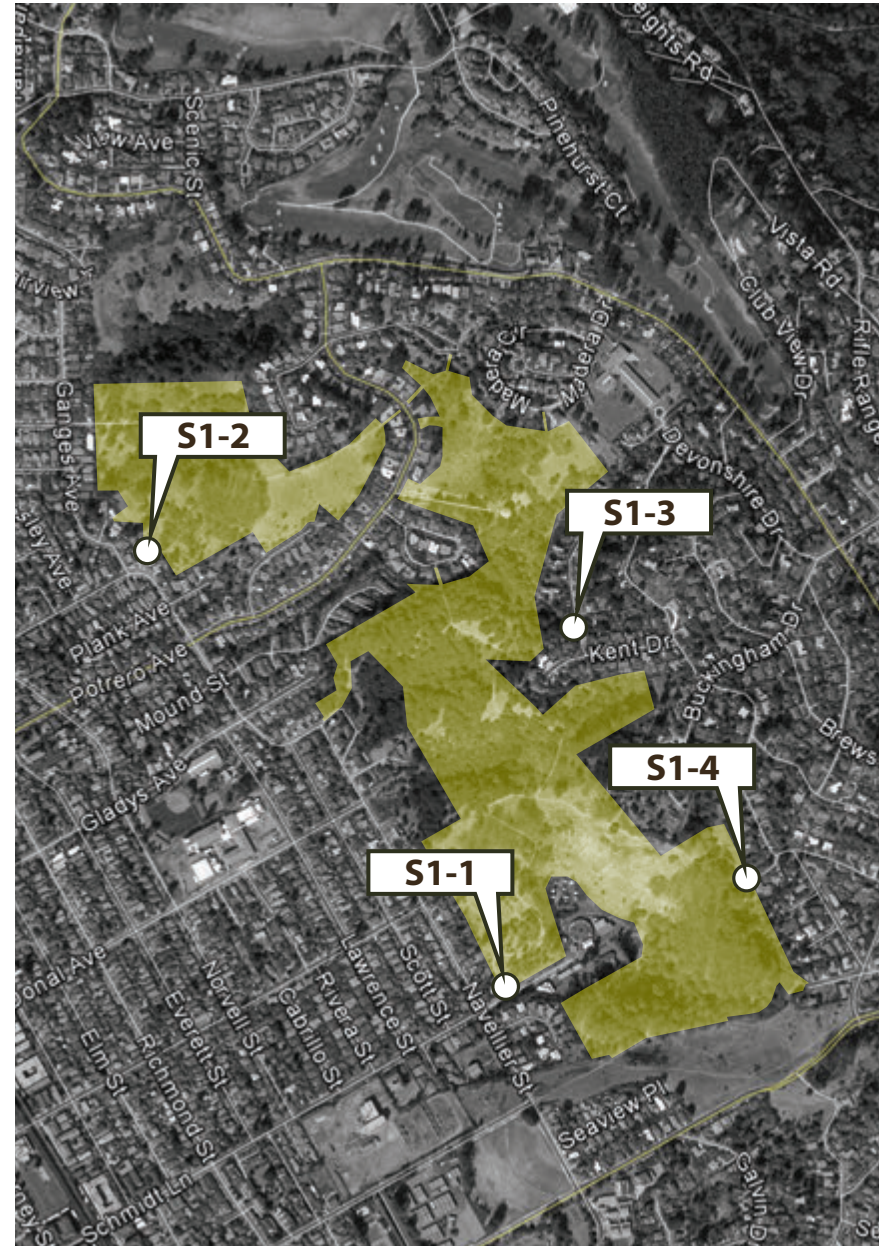
S1-2 Motorcycle Hill Gateway



S1-3 Regency Gateway



S1-4 King Court Gateway



NOTE: Locations approximate, subject to field verification and site conditions

S2 Trail Entry Sign Concept

Upright, single post-mounted informational sign.
Located at secondary trail access / entry points (off street).



POST

Galvanized steel U-channel or square tubing;
mount to existing posts where possible
ALTERNATE A: 4" x 4" cedar wood post (unpainted)
ALTERNATE B: Powder coated aluminum post

ENTRY PANEL

18" x 36" informational display panel
Typical aluminum street sign fabrication



S2 Trail Entry Sign Details

Hillside Natural Area logo band (illustrative)

Trail entry namebar / identifier

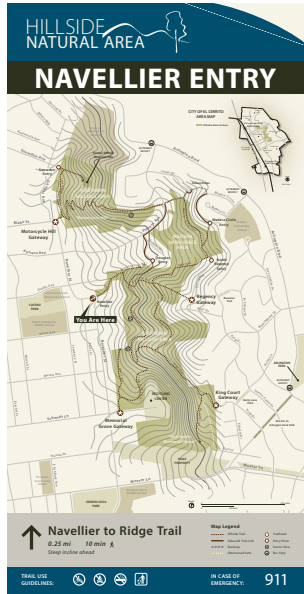
Orientation map of entire Hillside Natural Area, including "You Are Here" locator arrow and City of El Cerrito Area Map

Trail directional information, including trail name, distance / time, and cautionary visitor information

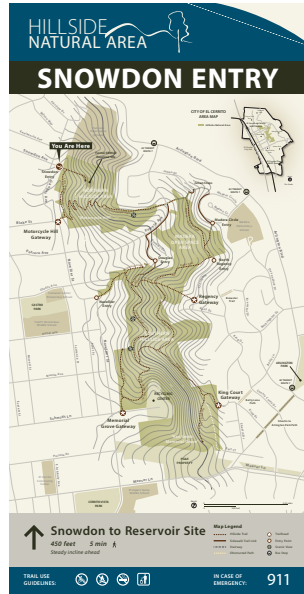
Map legend and trail features

Regulatory band featuring basic trail use guideline symbols and emergency contact information

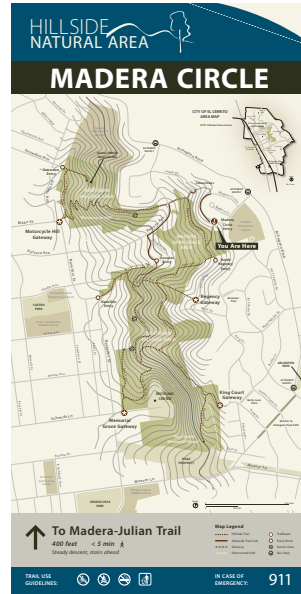
S2 Trail Entry Sign Locations



S2-1 Navellier Entry



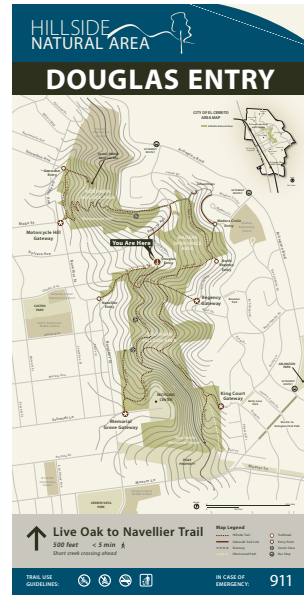
S2-2 Snowdon Entry



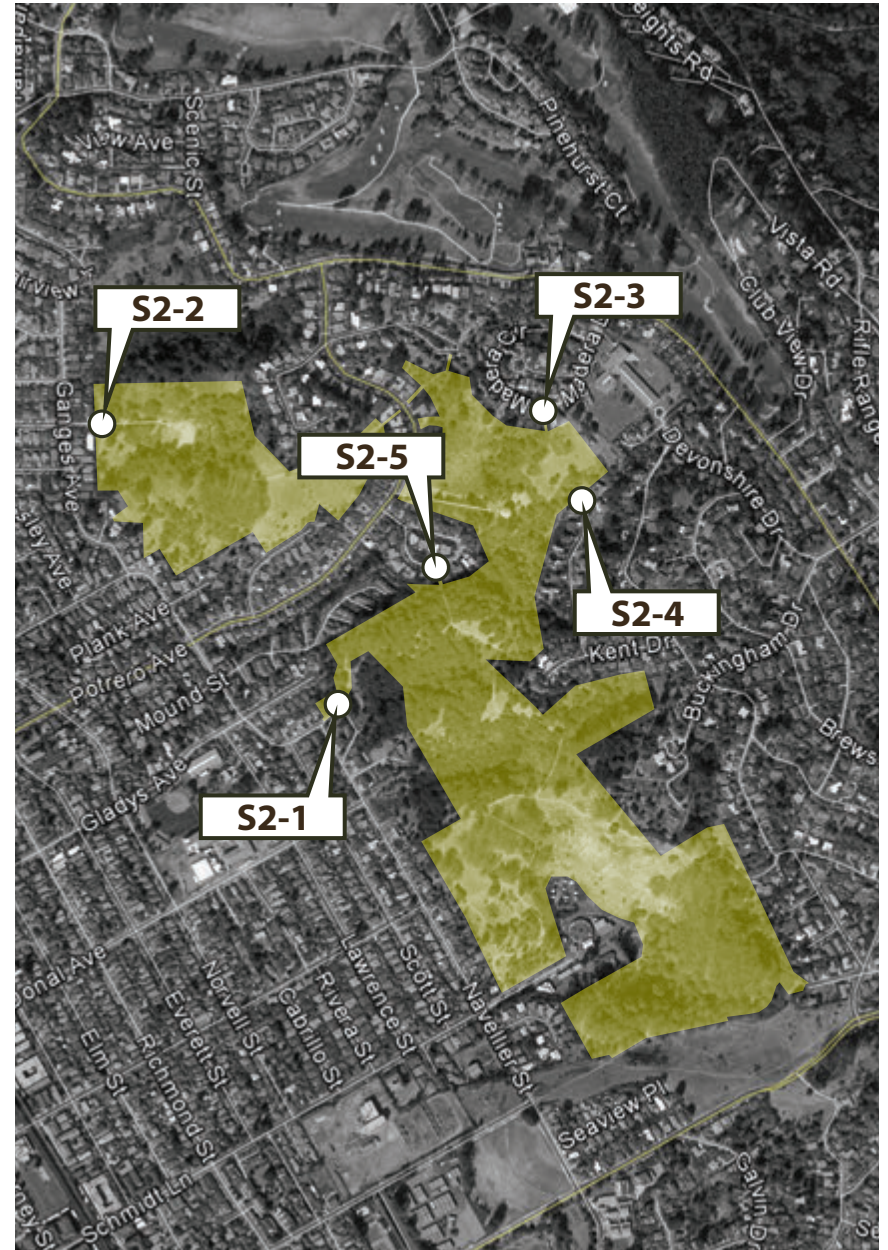
S2-3 Madera Circle Entry



S2-4 North Regency Entry



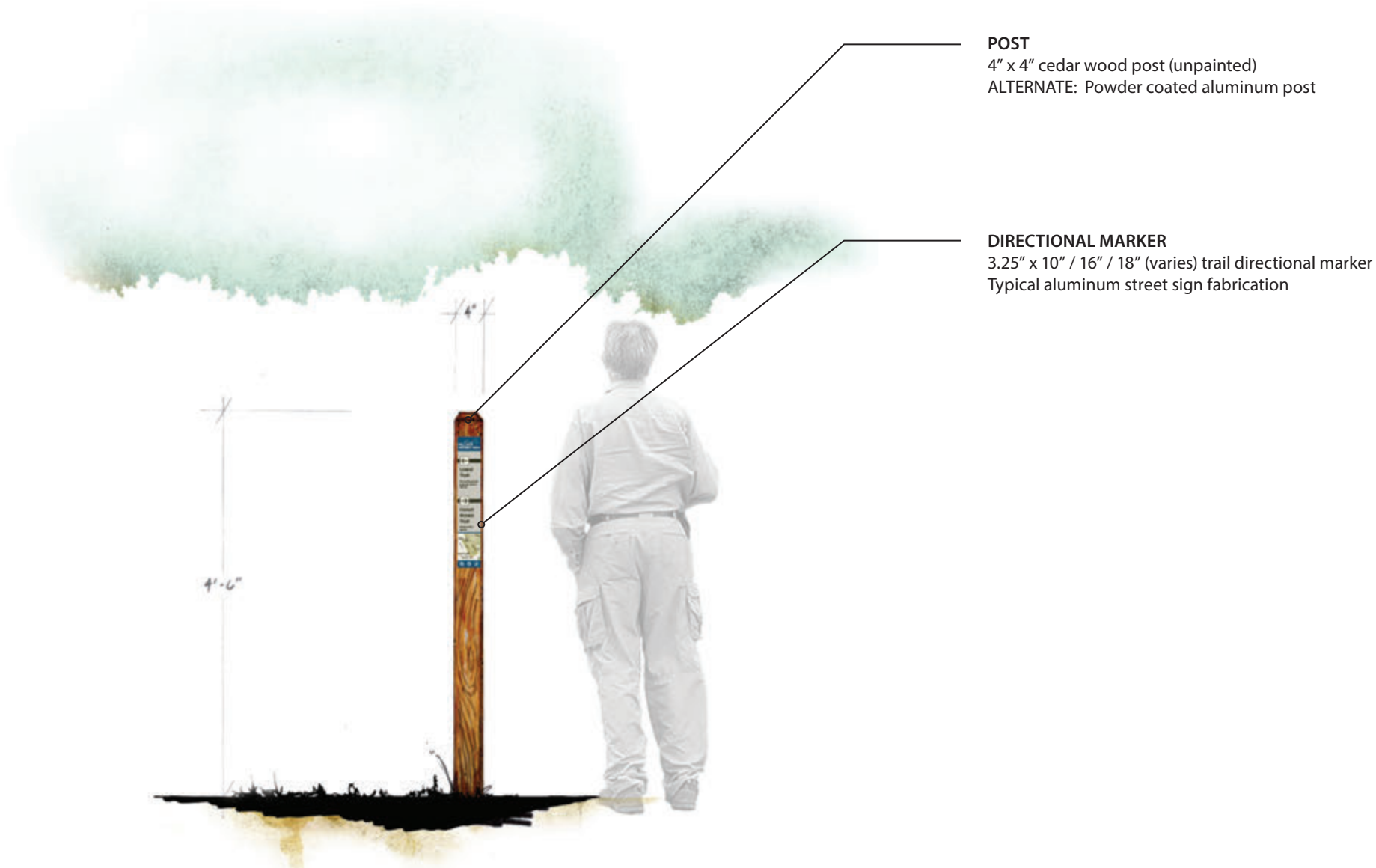
S2-5 Douglas Entry

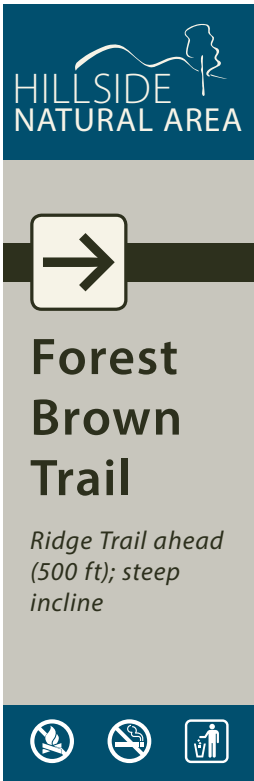


NOTE: Locations approximate, subject to field verification and site conditions

S3 Trail Directional Marker Concept

Post-mounted directional markers located at major trail junctions and intersections.





S3 Trail Marker Details

Hillside Natural Area logo band (illustrative)

Trail directional information, including arrows, trail name / destination, and trail alerts / notifications

Trail Marker Variations:

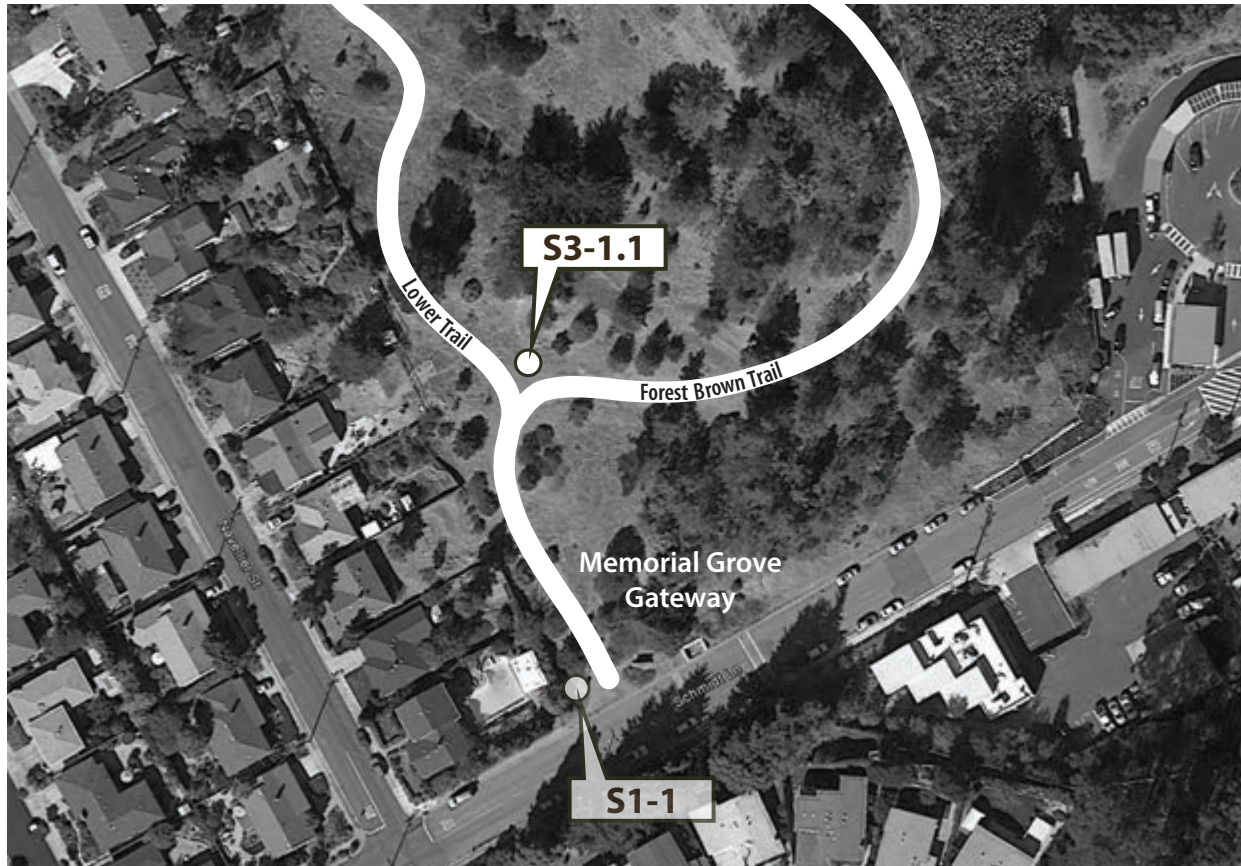
- Single Direction (3.25" x 10")
- Multi Direction (3.25" x 16")
- Multi Direction w/ Map (3.25" x 18")

Locator map (optional)

Regulatory band featuring basic trail use guideline symbols

S3 Trail Directional Marker Locations

S3-1 Forest Brown and Lower Trail junction



NOTE: Locations approximate, subject to field verification and site conditions

HILLSIDE NATURAL AREA

↑

Lower Trail

No outlet, private property ahead (800 ft)

→

Forest Brown Trail

Steep incline ahead

No Outlet (trail ends)

Signs: Waypoint

You Are Here

Memorial Grove Gateway

RECYCLING CENTER

North

S3-1.1

S3-2 Forest Brown and Live Oak Trail junction



NOTE: Locations approximate, subject to field verification and site conditions

HILLSIDE NATURAL AREA

←

Live Oak Trail

Scenic viewpoint and rest stop ahead

→

Forest Brown Trail

Memorial Grove Gateway ahead (0.25 mi)

Icons: No fire, No dogs, Restroom

S3-2.1

HILLSIDE NATURAL AREA

→

Forest Brown Trail

Ridge Trail ahead (500 ft); steep incline

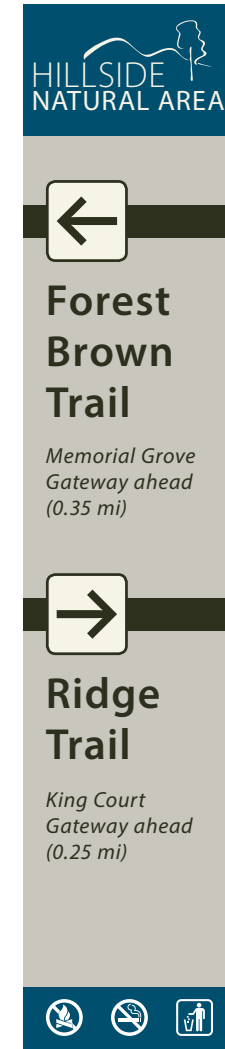
Icons: No fire, No dogs, Restroom

S3-2.2

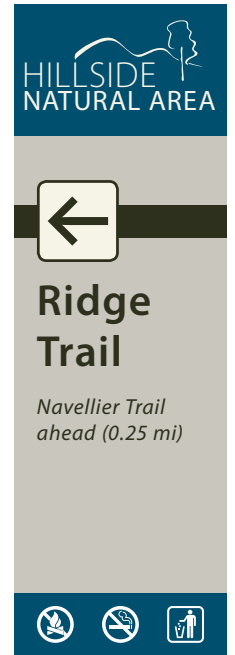
S3-3 Forest Brown and Ridge Trail junction



NOTE: Single post with two trail markers affixed to adjoining sides; locations approximate, subject to field verification and site conditions



S3-3.1

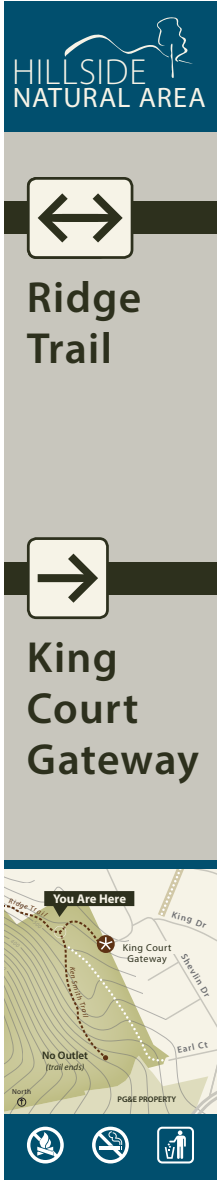


S3-3.2

S3-4 Ridge and Ken Smith Trail junction



NOTE: Locations approximate, subject to field verification and site conditions



S3-4.1

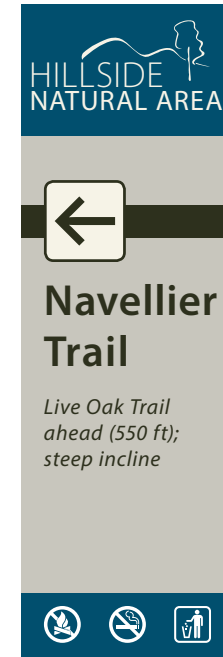


S3-4.2

S3-5 Navellier and Wildwood Creek Trail junction



NOTE: Locations approximate, subject to field verification and site conditions



S3-5.1



S3-5.2

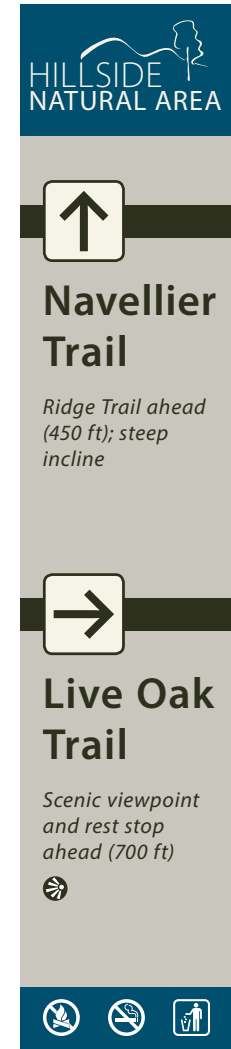
S3-6 Navellier and Live Oak / Douglas Trail junction



NOTE: Locations approximate, subject to field verification and site conditions



S3-6.1



S3-6.2

S3-7 Navellier and Ridge Trail junction



NOTE: Locations approximate, subject to field verification and site conditions



S3-7.1



S3-7.2

S3-8 Ridge and Madera-Julian Trail junction



NOTE: Locations approximate, subject to field verification and site conditions





Madera-Julian Trail
Stairs ahead



Ridge Trail
Navellier Trail ahead (0.2 mi); steady descent



S3-8.1

S3-9 Madera-Julian Trail and Madera Circle Entry junction



NOTE: Locations approximate, subject to field verification and site conditions



S3-9.1



S3-9.2

S3-10 Madera-Julian and Julian Steps junction



NOTE: Locations approximate, subject to field verification and site conditions

HILLSIDE NATURAL AREA

↑

Julian Steps

Stairs continue up to and beyond Julian Drive

→

Madera-Julian Trail

North Regency Entry ahead (0.2 mi); sensitive habitat

🚫 🚫 🚫

S3-10.1

S3-11 Potrero and Julian Steps / Motorcycle Hill Trail junction



NOTE: Locations approximate, subject to field verification and site conditions

HILLSIDE NATURAL AREA

↑

Julian Steps

Stairs to Madera-Julian Trail ahead (250 ft)

→

Douglas Entry

Follow Potrero Ave to Douglas Dr ahead (0.25 mi)

Icons: No dogs, No bikes, Restroom

S3-11.1

HILLSIDE NATURAL AREA

↑

Motorcycle Hill Trail

Scenic viewpoint ahead (500 ft)

←

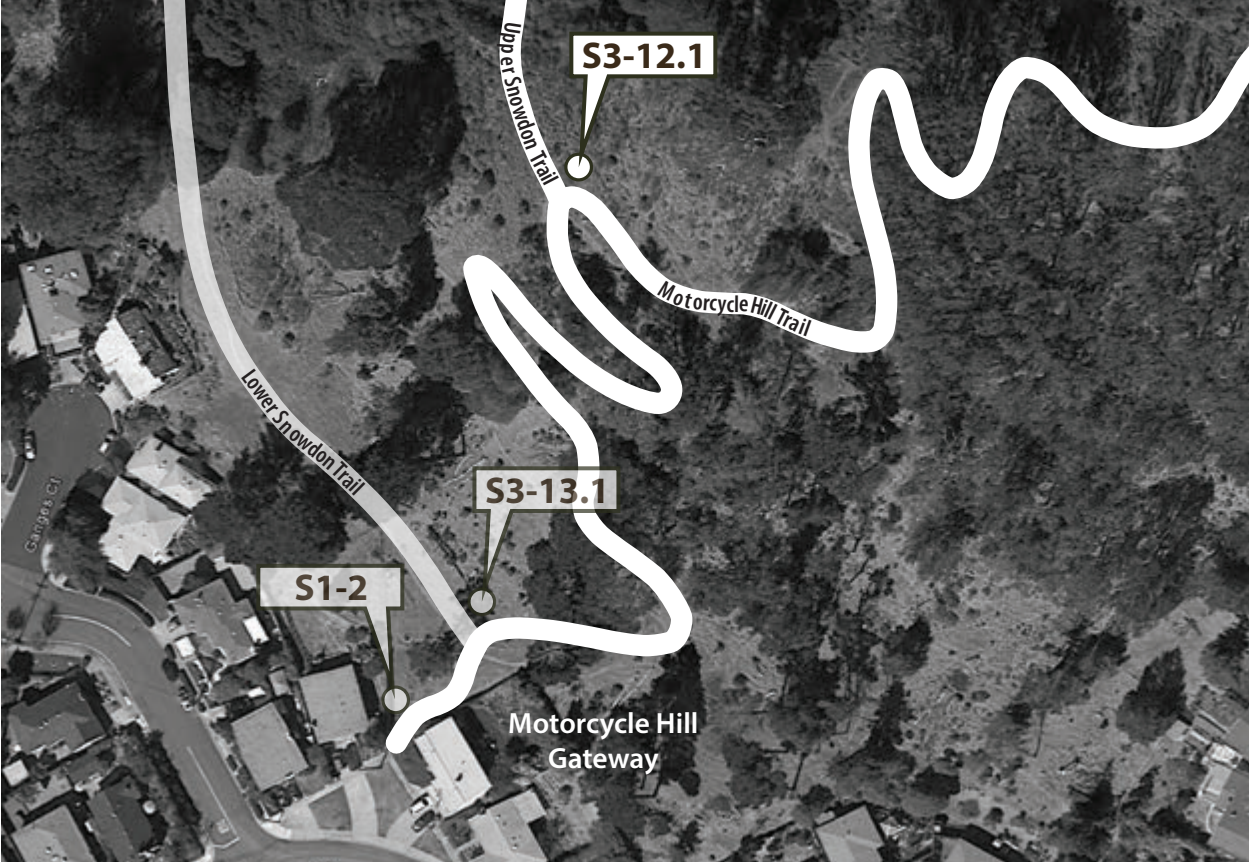
Douglas Entry

Follow Potrero Ave to Douglas Dr ahead (0.25 mi)

Icons: No dogs, No bikes, Restroom

S3-11.2

S3-12 Motorcycle Hill and Upper Snowdon Trail junction



NOTE: Locations approximate, subject to field verification and site conditions



←

Upper Snowdon Trail

Sensitive habitat, stay on trail

→

Motorcycle Hill Trail

Steep incline; scenic viewpoint ahead (0.15 mi)

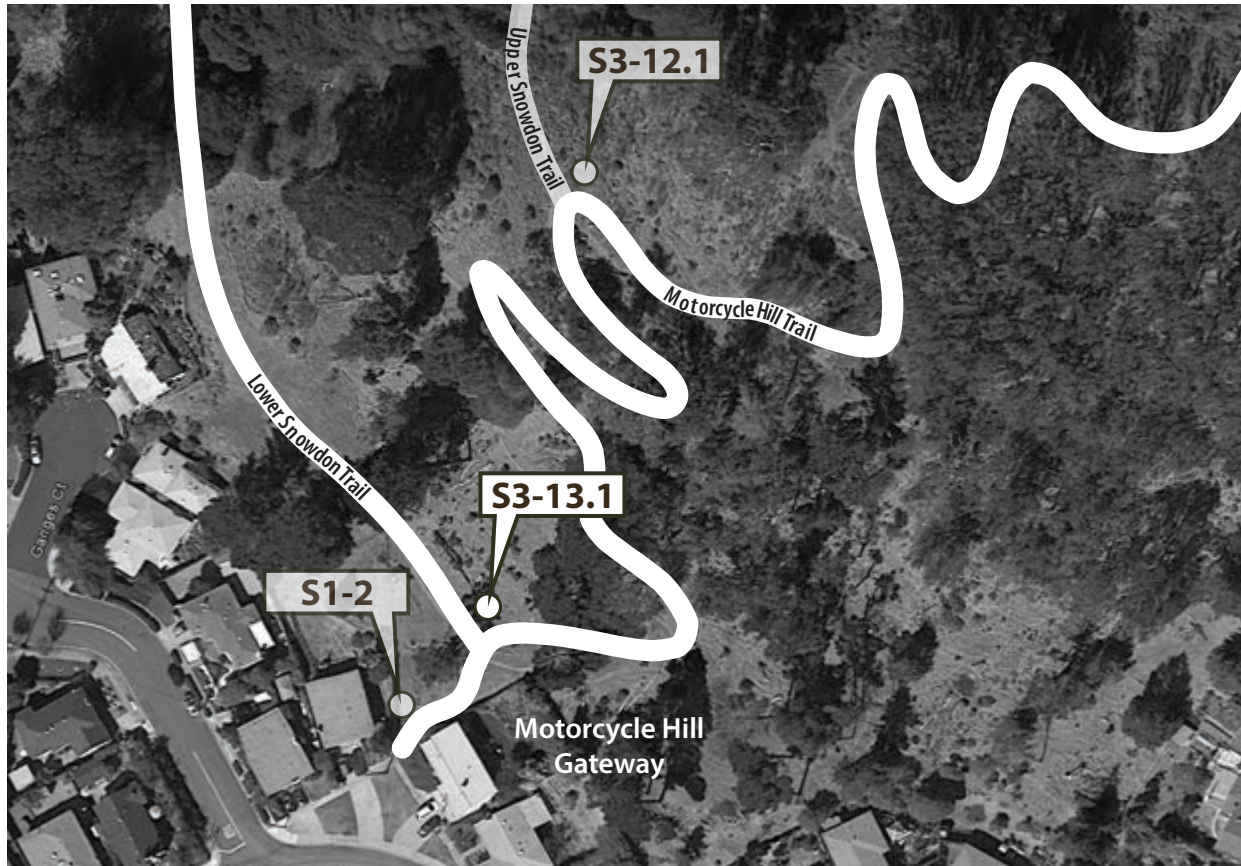







S3-12.1

S3-13 Motorcycle Hill and Lower Snowdon Trail junction



NOTE: Locations approximate, subject to field verification and site conditions



←


**Lower
Snowdon
Trail**


*Snowdon Entry
ahead (800 ft)*

→

**Motorcycle
Hill Trail**

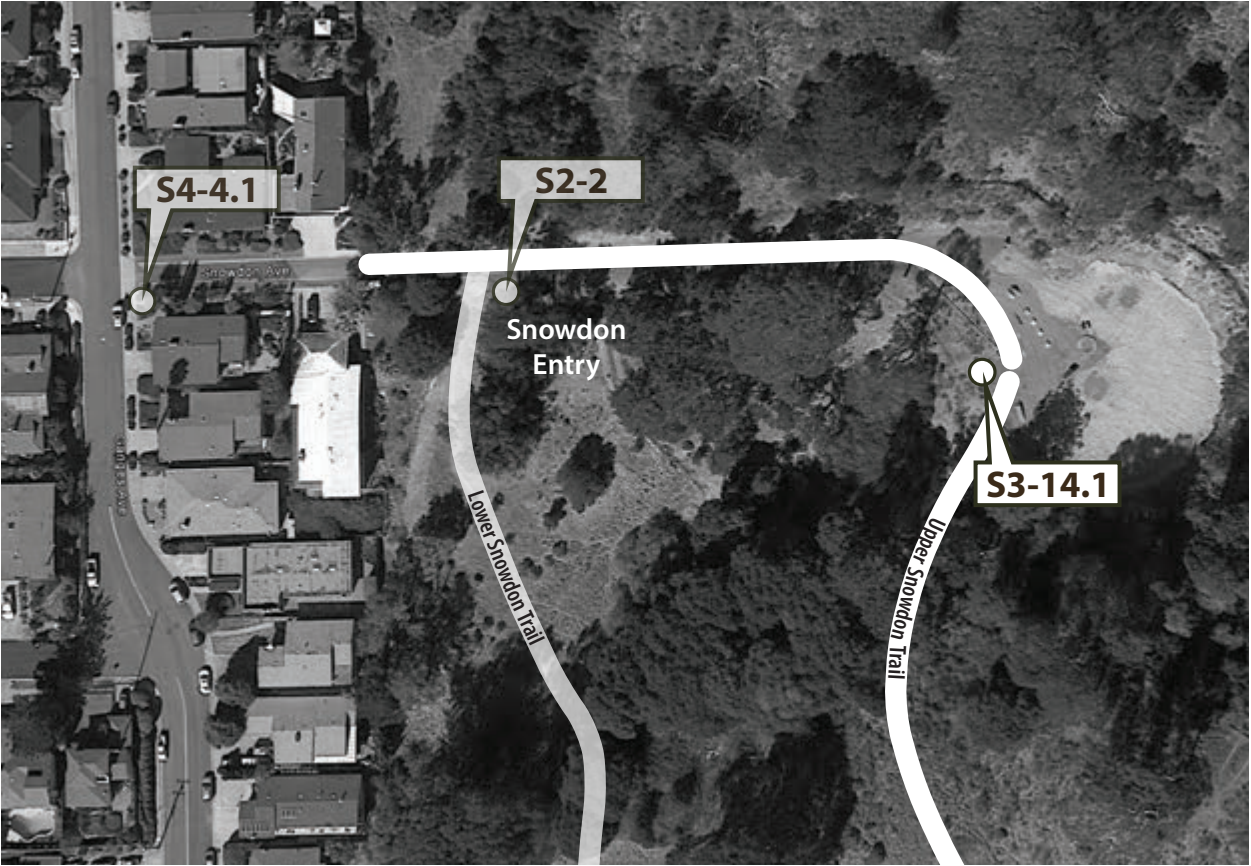
*Steep incline;
scenic viewpoint
ahead (0.5 mi)*





S3-13.1

S3-14 Reservoir and Upper Snowdon Trail junction



NOTE: Locations approximate, subject to field verification and site conditions

HILLSIDE NATURAL AREA

→

Upper Snowdon Trail

Unimproved trail link, use caution; Motorcycle Hill Trail ahead (350 ft)

⊘ ⊘ ⊘

S3-14.1

S4 Street Directional Sign Concept

Pedestrian-scale directional sign.

Located adjacent street rights-of-way to direct visitors to nearby trail entry points.



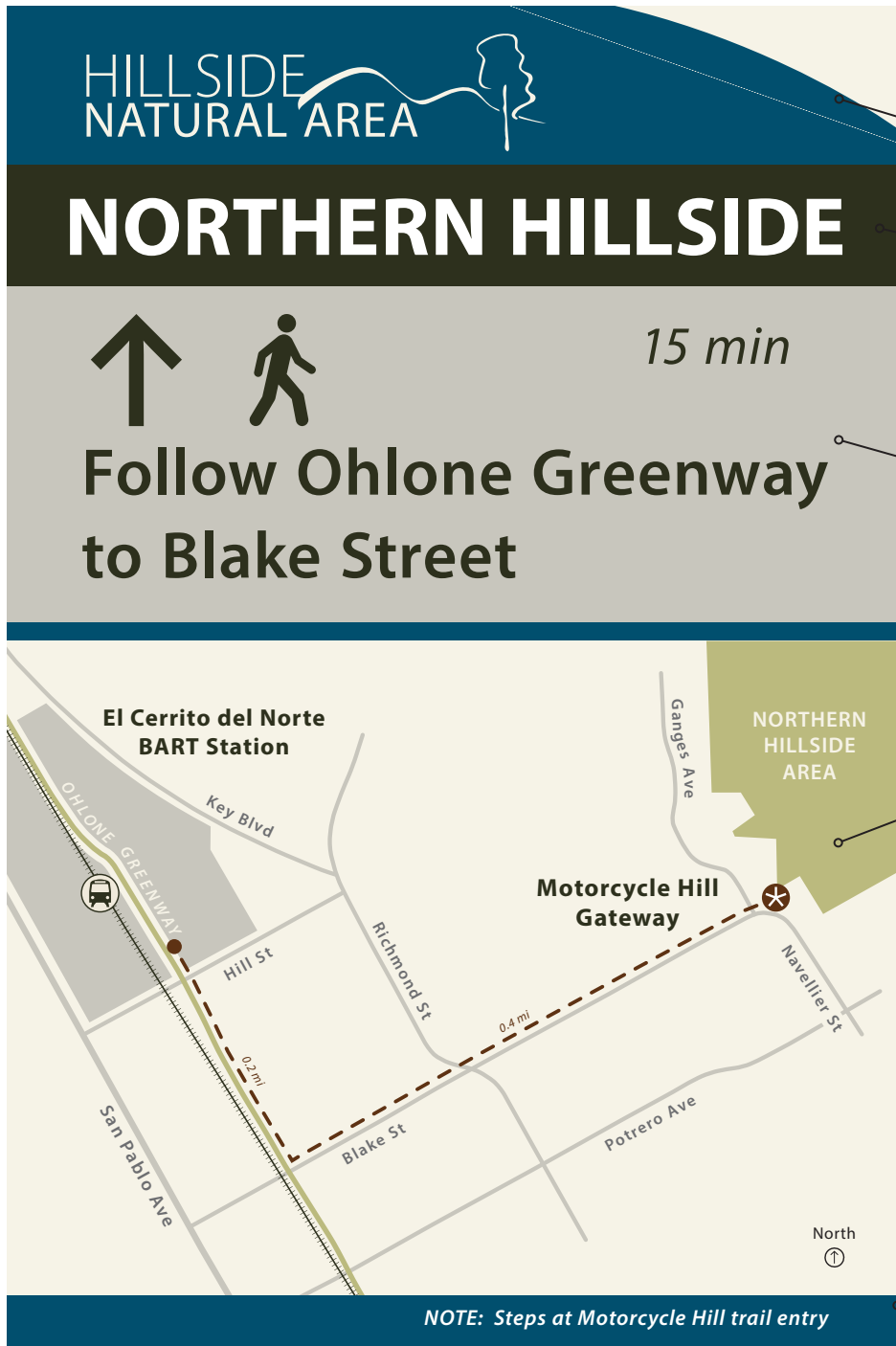
POST

Galvanized steel U-channel or square tubing;
mount to existing posts where possible
ALTERNATE: 4" x 4" cedar wood post (unpainted)

DIRECTIONAL SIGN

12" x 18" directional sign panel with map
12" x 9" directional sign panel variation (no map)
Typical aluminum street sign fabrication

S4 Street Sign Details



Hillside Natural Area logo band (illustrative)

Hillside area namebar / identifier

Directional information, including arrow, suggested street route, and time to reach destination

Directional map (optional) featuring nearby Hillside access point(s), suggested street route, and distance of each route segment

Route alerts / notifications

NOTE: Steps at Motorcycle Hill trail entry

S4 Street Directional Sign Locations


S4-1 Del Norte BART



NOTE: Locations approximate, subject to field verification and site conditions

HILLSIDE NATURAL AREA

NORTHERN HILLSIDE

↑  15 min


Follow Ohlone Greenway to Blake Street

NOTE: Steps at Motorcycle Hill trail entry

S4-1.1

HILLSIDE NATURAL AREA

NORTHERN HILLSIDE

←  10 min

Motorcycle Hill entry at Blake and Navellier

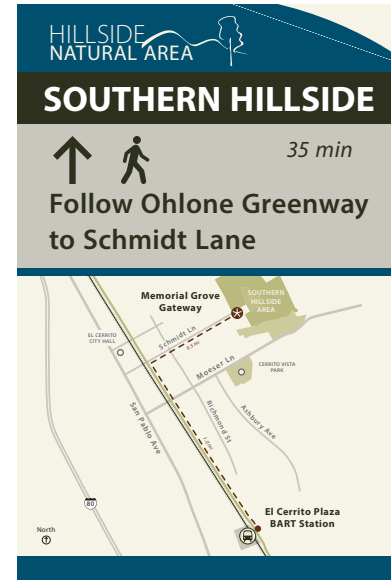
NOTE: Steps at Motorcycle Hill trail entry

S4-1.2

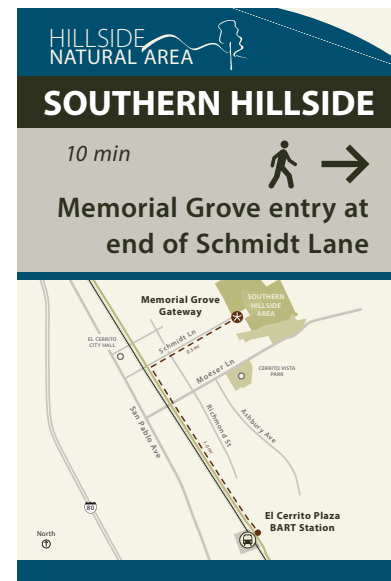
S4-2 Plaza BART



NOTE: Locations approximate, subject to field verification and site conditions



S4-2.1



S4-2.2

S4-3 Potrero and Navallier Intersection



NOTE: Locations approximate, subject to field verification and site conditions

HILLSIDE NATURAL AREA

NORTHERN HILLSIDE

↑ 5 min
Motorcycle Hill entry at Blake and Navellier

NOTE: Steps at Motorcycle Hill trail entry

S4-3.1

HILLSIDE NATURAL AREA

SOUTHERN HILLSIDE

↑ 5 min
Navellier entry ahead past Scott Street

S4-3.2


S4-4 Snowdon and Ganges Intersection



NOTE: Locations approximate, subject to field verification and site conditions

HILLSIDE NATURAL AREA

NORTHERN HILLSIDE

↑ 

Snowdon Entry to Northern Hillside Area

S4-4.1

S4-5 Potrero and Arlington Intersection

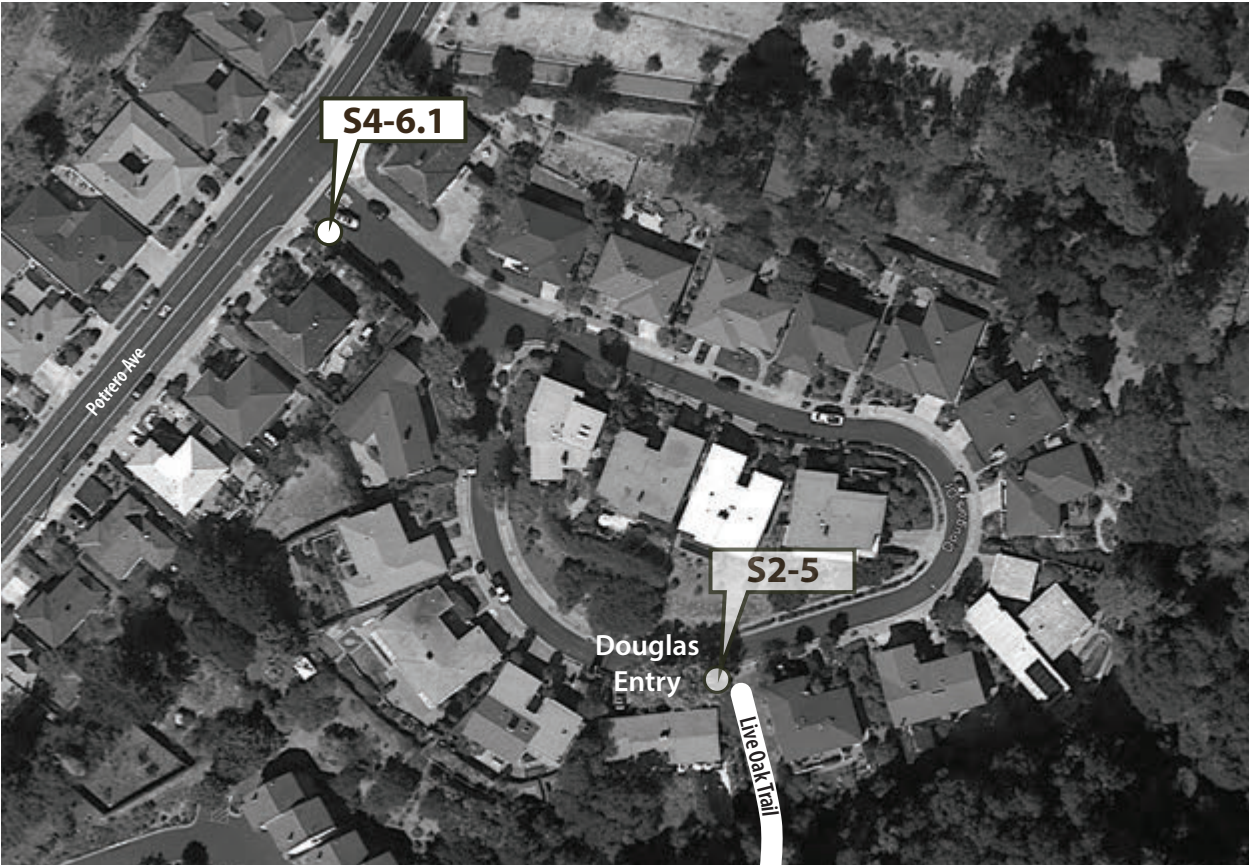


NOTE: Locations approximate, subject to field verification and site conditions



S4-5.1


S4-6 Potrero and Douglas Intersection



NOTE: Locations approximate, subject to field verification and site conditions

HILLSIDE NATURAL AREA

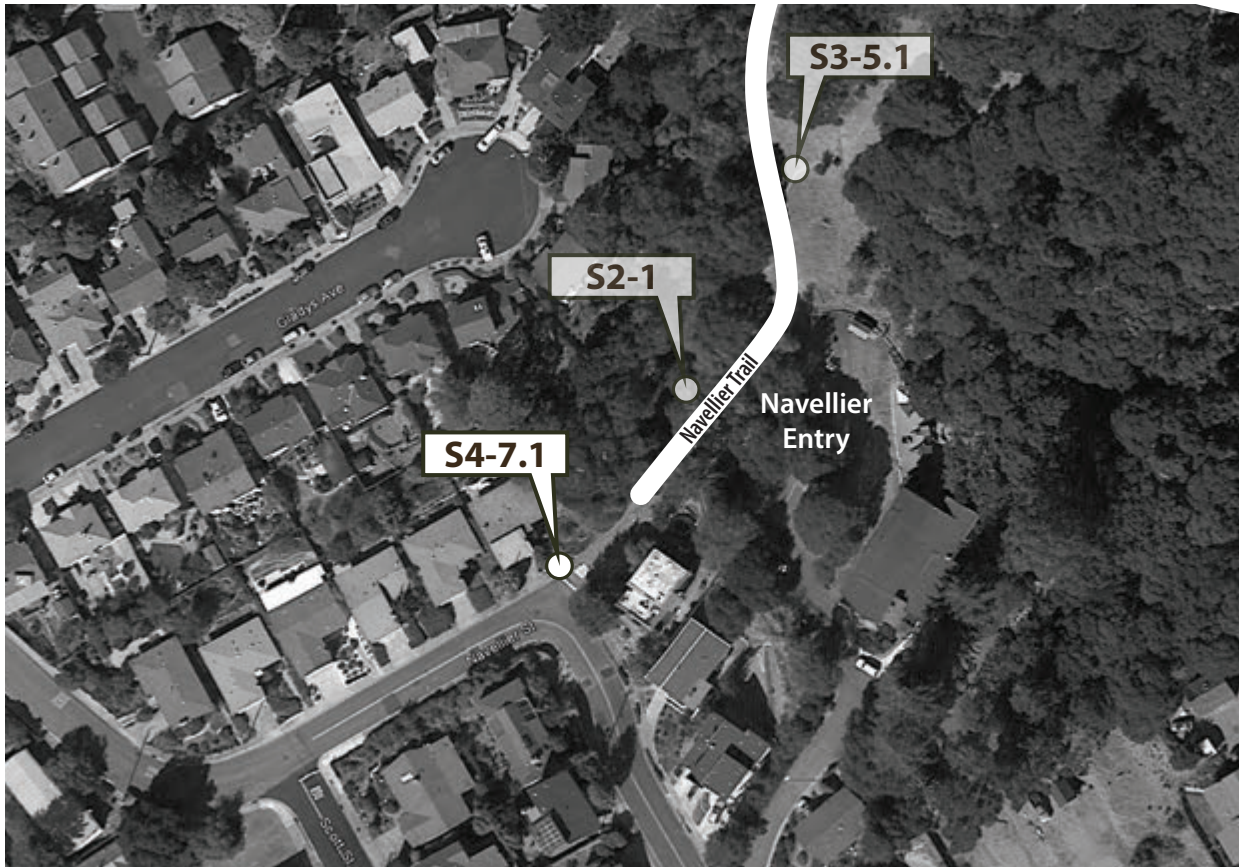
SOUTHERN HILLSIDE

↑  < 5 min

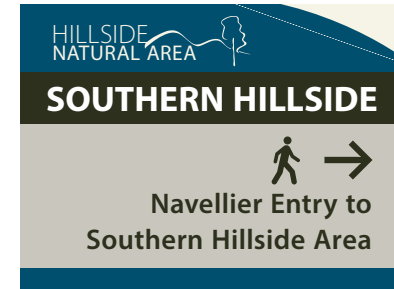
Hillside trail access from Douglas Drive ahead

S4-6.1

S4-7 Navellier Entry

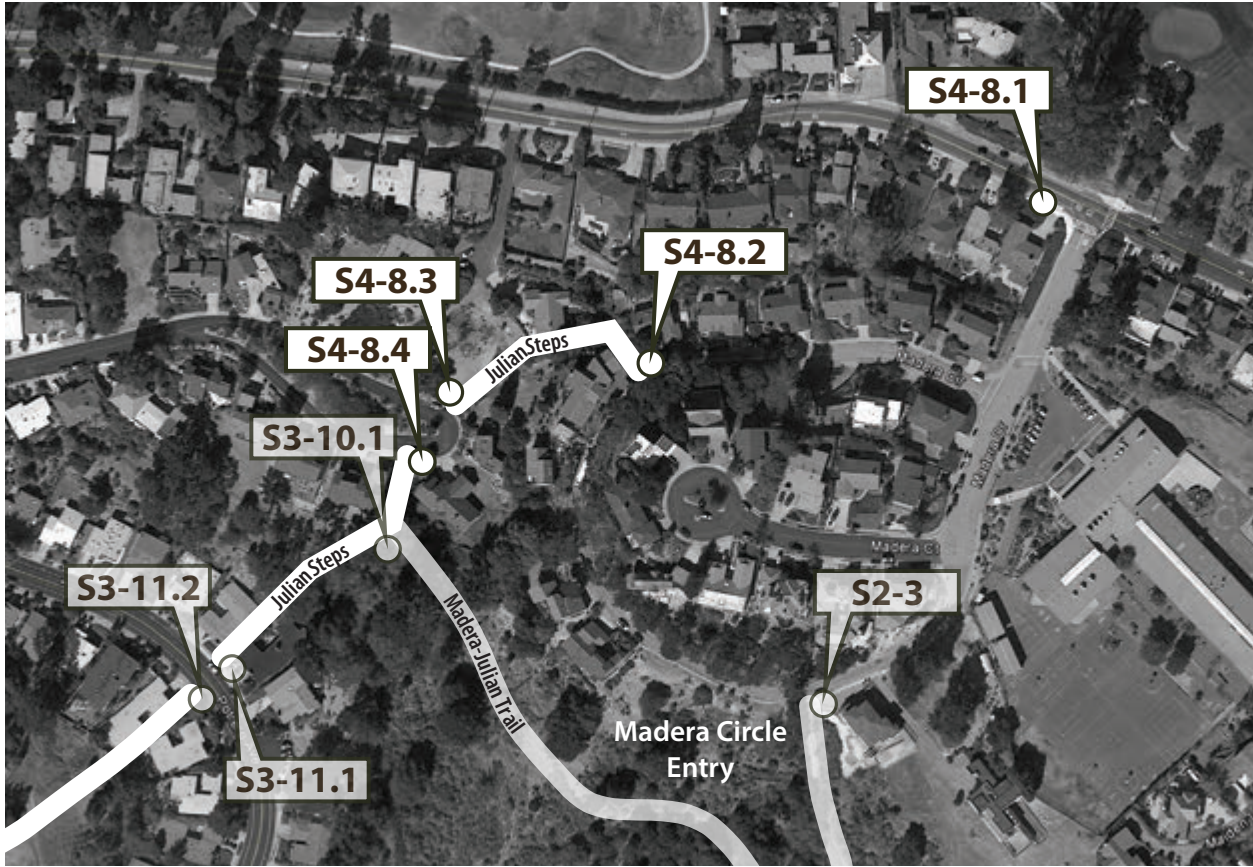


NOTE: Locations approximate, subject to field verification and site conditions



S4-7.1

S4-8 Arlington and Madera/Julian Steps Intersection



NOTE: Locations approximate, subject to field verification and site conditions

HILLSIDE NATURAL AREA

MADERA OPEN SPACE

↑ ↑ 5 min
Julian Steps to Madera Open Space Area

NOTE: Stairs at Madera Circle Entry and Julian Steps

S4-8.2

HILLSIDE NATURAL AREA

MADERA OPEN SPACE

↑ ↑ 5 min
Julian Steps to Madera Circle Entry ahead

NOTE: Stairs ahead

S4-8.3

HILLSIDE NATURAL AREA

MADERA OPEN SPACE

< 5 min ↑ →
Hillside trail access from Madera Drive ahead

NOTE: Stairs at entry to Madera Open Space

S4-8.1

HILLSIDE NATURAL AREA

MADERA OPEN SPACE

↑ ↑
Hillside trail access from Julian Steps ahead

NOTE: Stairs ahead

S4-8.4

Other Citywide Trail and Path Signs

The signs depicted in this section represent modified S3 and S4 sign concepts for trails and pathways located outside the Hillside Natural Area. These signs primarily delineate the city's stand-alone trail, stairway, and path segments.

The signs do not replace the city's existing and planned on-street bike and pedestrian wayfinding programs. Rather, they provide identification for less-visible paths and trails that ties into the wayfinding plan developed for the larger Hillside Natural Area. Where appropriate, these signs direct users to specific destinations and other park areas but are not intended to serve as trail maps for the city's parks themselves; no S1 or S2 signs were developed for any locations outside of the Hillside Natural Area as part of this plan.

MODIFIED SIGN DETAILS

The modified S3 and S4 sign concepts represented in this section are all labeled with an "O" prefix, indicating their intended use on trails and pathways outside of the Hillside Natural Area.

Design details on these signs remain consistent with the signs developed for the Hillside Natural Area, though they feature a modified logo header with the title "El Cerrito Paths and Trails" replacing "Hillside Natural Area" (illustrated below).



Modified header for signs placed outside of the Hillside Natural Area

LOCATIONS

To organize the wayfinding sign program for locations outside of the Hillside Natural Area, the trails have been clustered into six (6) groups:

Group 1: Short, stand-alone paths, trails, and stairways across the city.

Group 2: Trails in and around Tassajara Park.

Group 3: Canyon Park connection to/from Ohlone Greenway (at El Cerrito del Norte BART Station).

Group 4: Trails in and around Huber Park.

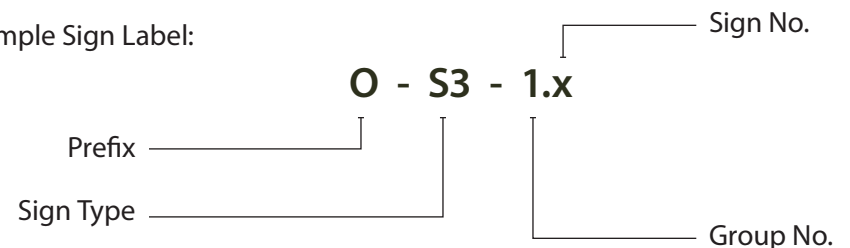
Group 5: Creekside Park connection to/from Ohlone Greenway (at El Cerrito Plaza BART Station).

Group 6: Arlington Park connection to/from Hillside Natural Area (at King Court Gateway).

SIGN LABELS

The group numbers noted above are incorporated into the overall sign labeling protocol for this section as follows:

Sample Sign Label:



O-S3-1.1 La Honda Way



NOTE: Locations approximate, subject to field verification and site conditions



O-S3-1.1

O-S3-1.2 Francisco to Tulare Path



NOTE: Locations approximate, subject to field verification and site conditions

A vertical sign panel with a blue header containing the 'EL CERRITO PATHS AND TRAILS' logo. Below the header is a white square with a black upward-pointing arrow. Underneath the arrow, the text 'Francisco Tulare Path' is displayed in a bold, sans-serif font, followed by the phrase 'Stairs ahead' in a smaller, italicized font. At the bottom of the panel is a blue footer containing a white wheelchair accessibility icon.

O-S3-1.2

O-S3-1.3 Tamalpais to Arlington Path | O-S3-1.4 Highland Walk



NOTE: Locations approximate, subject to field verification and site conditions

EL CERRITO
PATHS AND TRAILS

↑

**Tamalpais
Steps**

Stairs ahead

♿

O-S3-1.3

EL CERRITO
PATHS AND TRAILS

↑

**Highland
Walk**

*Trail extends
between Harvard
and Scenic Street*

♿

O-S3-1.4

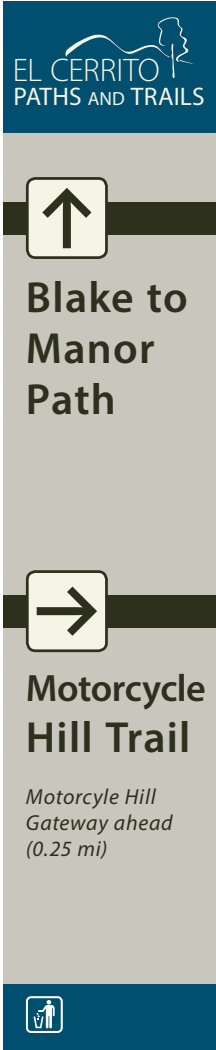
O-S3-1.5 and O-S3-1.6 Blake to Manor Path



NOTE: Locations approximate, subject to field verification and site conditions



O-S3-1.5

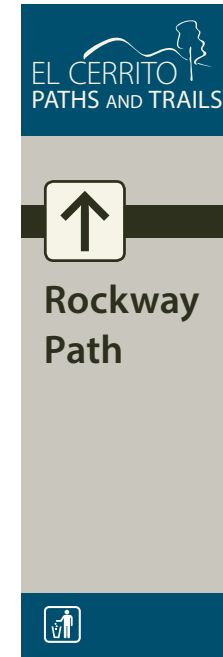


O-S3-1.6

O-S3-1.7 Fairmount to Rockway Path

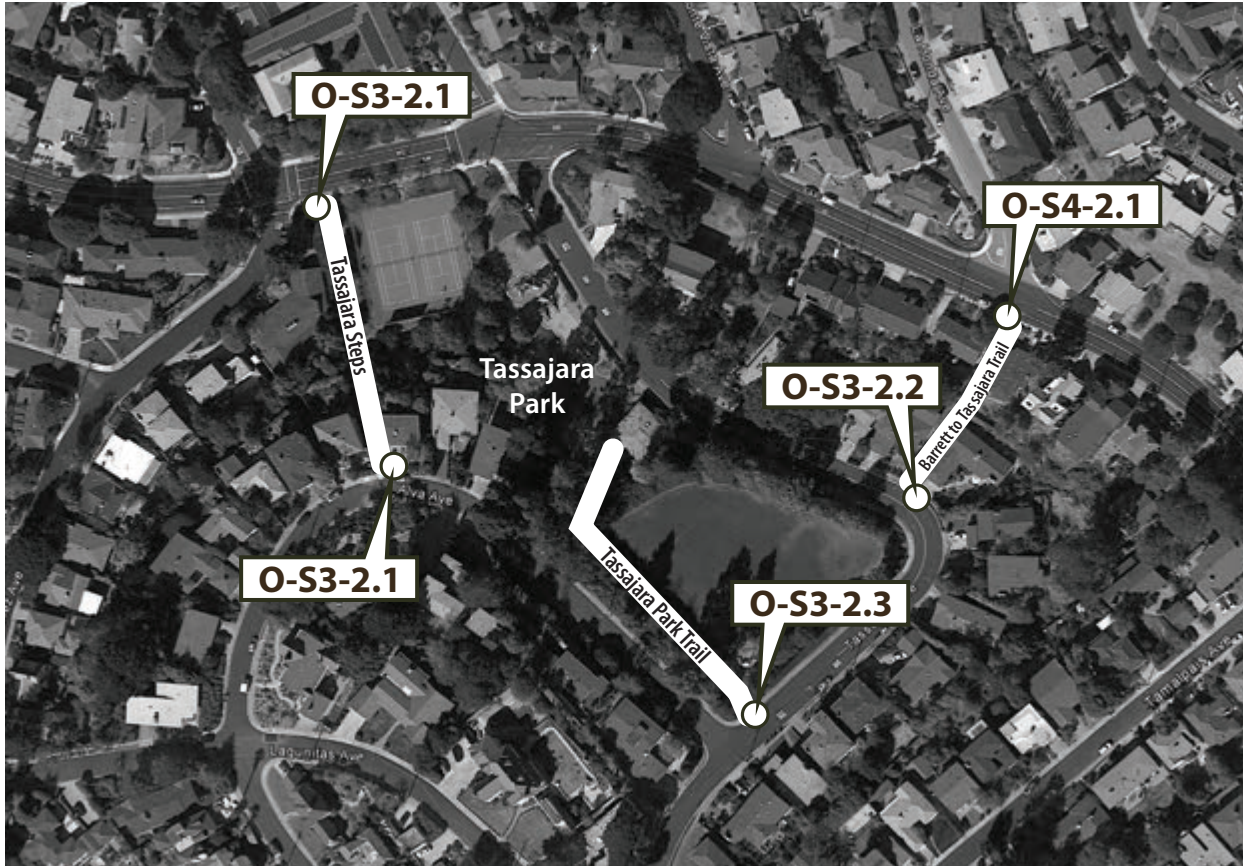


NOTE: Locations approximate, subject to field verification and site conditions



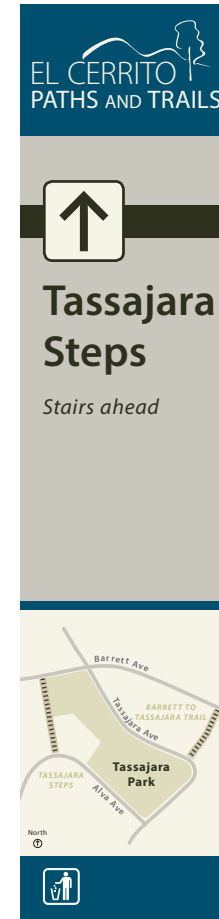
O-S3-1.7

O-S3-2 and O-S4-2 Tassajara Park

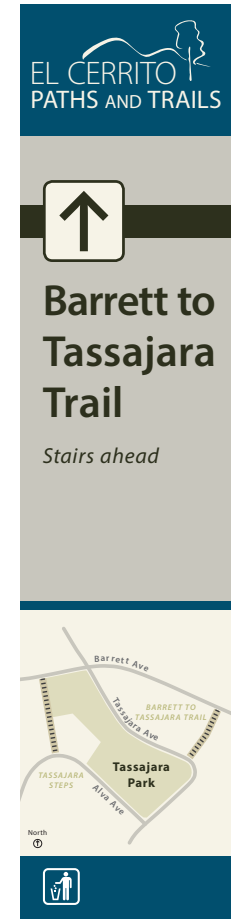


NOTE: Locations approximate, subject to field verification and site conditions

Signs link surrounding trail paths and stairways to Tassajara Park. The O-S3-2.3 sign represents a simple entry marker to the park which may not be needed pending other sign planning efforts by the city. The O-S4-2.1 sign at the top of the Barrett to Tassajara Trail is situated near an existing bus stop to increase awareness of the trail and park to transit riders.



O-S3-2.1



O-S3-2.2



O-S3-2.3



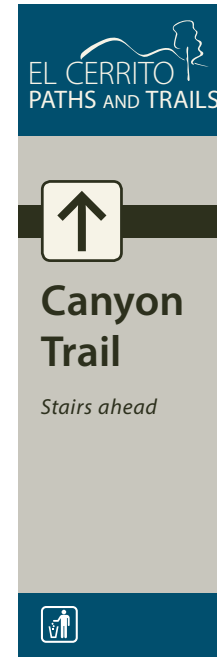
O-S4-2.1

O-S3-3 and O-S4-3 Canyon Trail Park

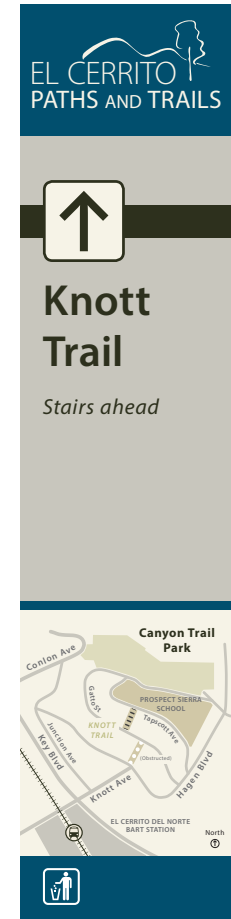


NOTE: Locations approximate, subject to field verification and site conditions

Signs link the Ohlone Greenway to/from Canyon Trail Park from the El Cerrito del Norte BART Station area (signs O-S4-3.1, O-S4-3.2, and O-S4-3.3). The O-S3-3.2 sign marks the Knott Trail and includes a map highlighting Canyon Trail Park. The O-S3-3.1 sign provides a simple entry marker to the north entry of the park which may not be needed pending other sign planning efforts by the city.



O-S3-3.1



O-S3-3.2



O-S4-3.1

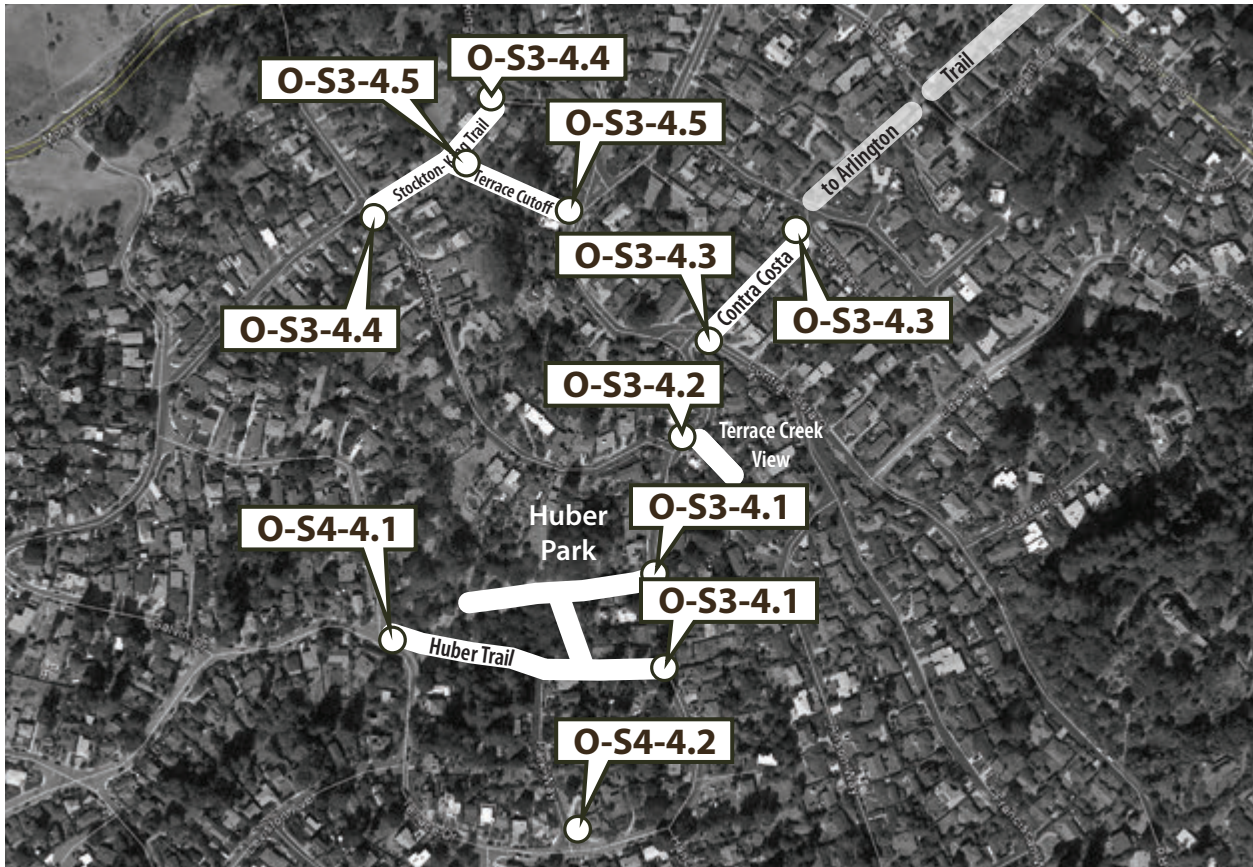


O-S4-3.2



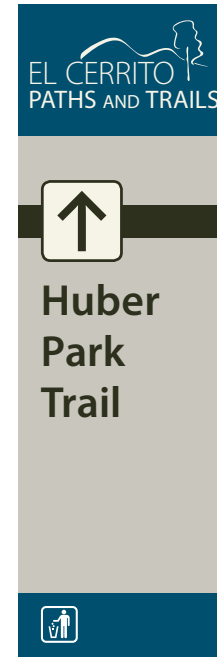
O-S4-3.3

O-S3-4 and O-S4-4 Huber Park

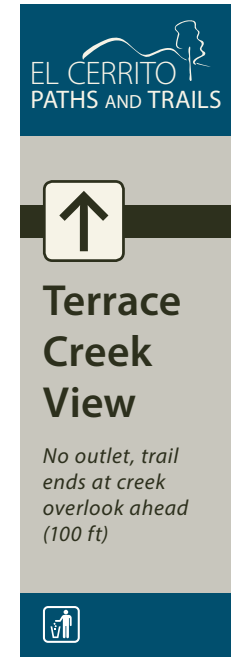


NOTE: Locations approximate, subject to field verification and site conditions

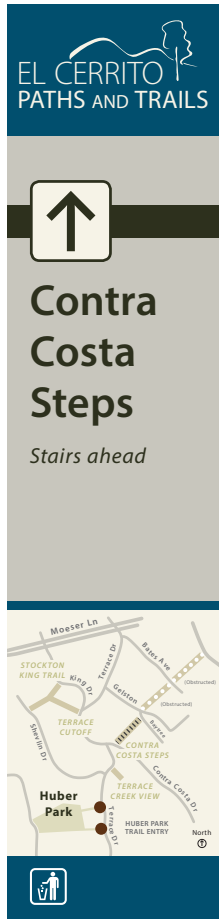
Signs mark the various trail segments, paths, and stairways in and around Huber Park. The O-S3-4.3 sign marks the open portion of the Contra Costa Steps and provides a map highlighting Huber Park and the other surrounding trail links. The O-S4-4.2 sign provides direction to the park via Park Way at Terrace Dr. The O-S3-4.1 and O-S4-4.1 signs provide simple entry markers to the park which may not be needed pending other sign planning efforts by the city.



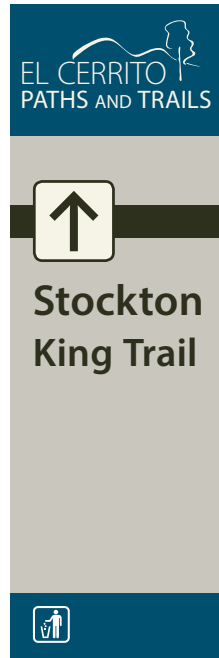
O-S3-4.1



O-S3-4.2



O-S3-4.3



O-S3-4.4



O-S3-4.5

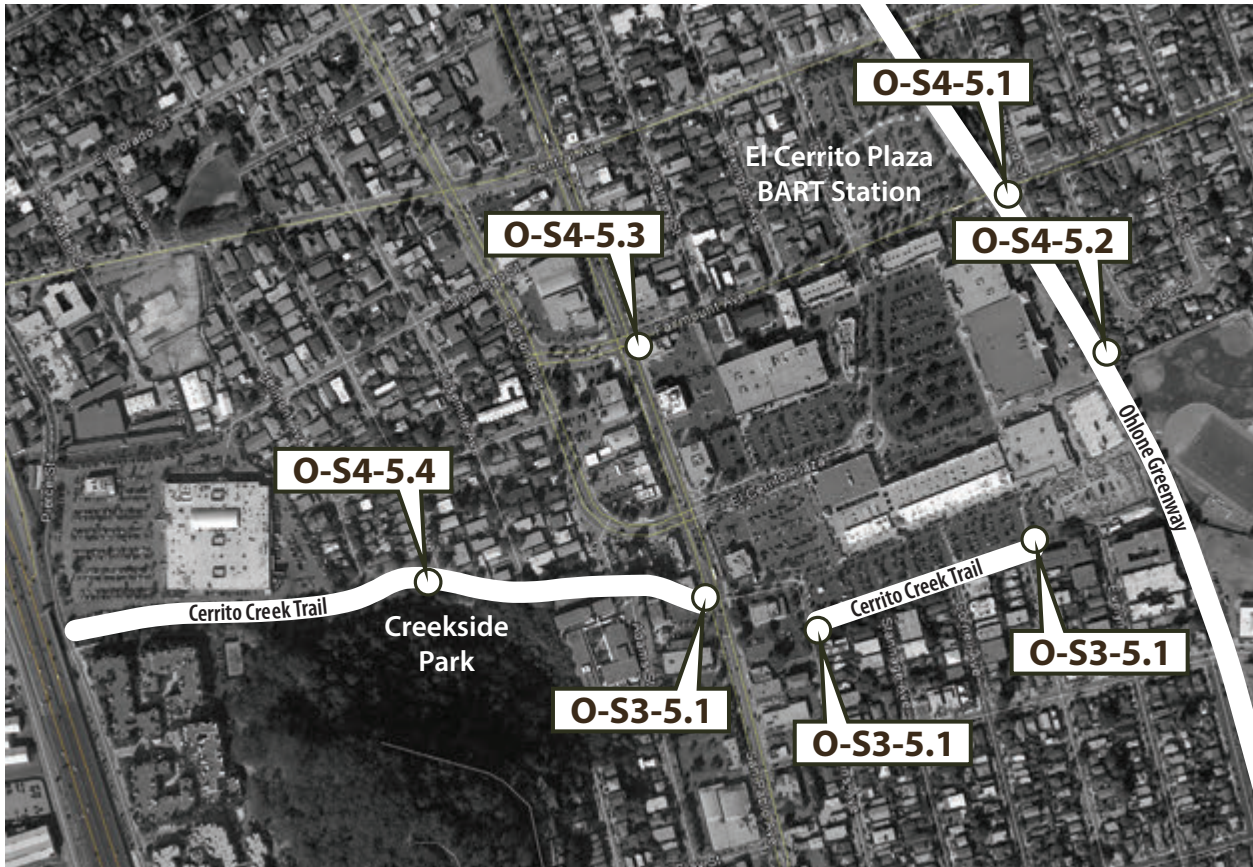


O-S4-4.1



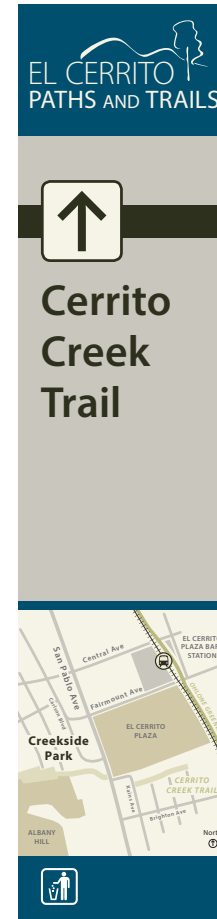
O-S4-4.2

O-S3-5 and O-S4-5 Creekside Park



NOTE: Locations approximate, subject to field verification and site conditions

Signs link the Ohlone Greenway to/from Creekside Park via two routes, both from the El Cerrito Plaza BART Station area. The first route provides a connection to the Cerrito Creek Trail link along the south end of El Cerrito Plaza (signs O-S3-5.1, O-S4-5.1, and O-S4-5.2). The second route links the park via Fairmount Avenue (signs O-S4-5.1 and O-S4-5.3). The O-S3-5.1 sign marks both sections of the Cerrito Creek Trail at each entry point. All signs include a map of the area highlighting key local resources (e.g. Creekside Park, Albany Hill, El Cerrito Plaza and BART Station, Ohlone Greenway, etc.).



O-S3-5.1

EL CERRITO PATHS AND TRAILS

CREEKSIDE PARK

↑ ↑ 15 min
Follow Ohlone Greenway
to El Cerrito Plaza

NOTE: Street crossing at San Pablo Ave

O-S4-5.1

EL CERRITO PATHS AND TRAILS

CREEKSIDE PARK

10 min →
Follow El Cerrito Plaza to
Cerrito Creek Trail

NOTE: Street crossing at San Pablo Ave

O-S4-5.2

EL CERRITO PATHS AND TRAILS

CREEKSIDE PARK

← 10 min
Follow San Pablo Avenue
to El Cerrito Plaza

NOTE: Street crossing at San Pablo Ave

O-S4-5.3

EL CERRITO PATHS AND TRAILS

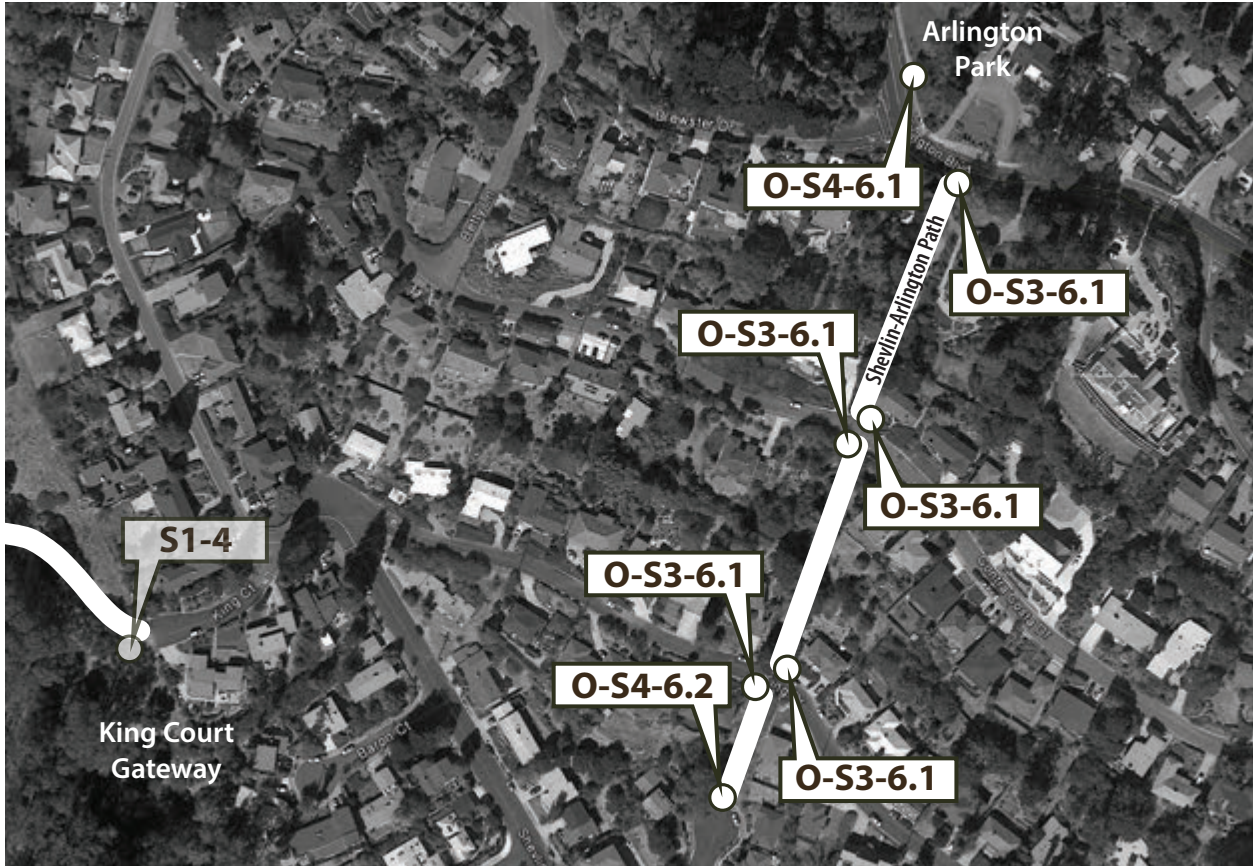
CREEKSIDE PARK

↑ ↑
Creekside Park entry to
Cerrito Creek

NOTE: Street crossing at San Pablo Ave

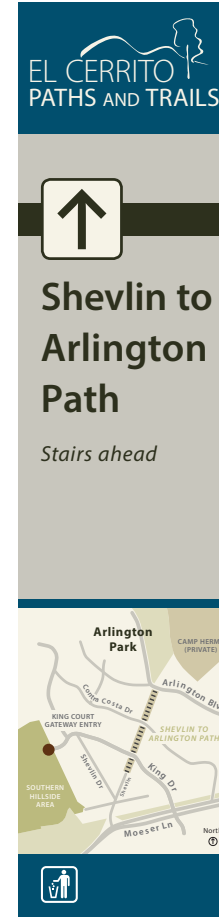
O-S4-5.4

O-S3-6 and O-S4-6 Arlington Park

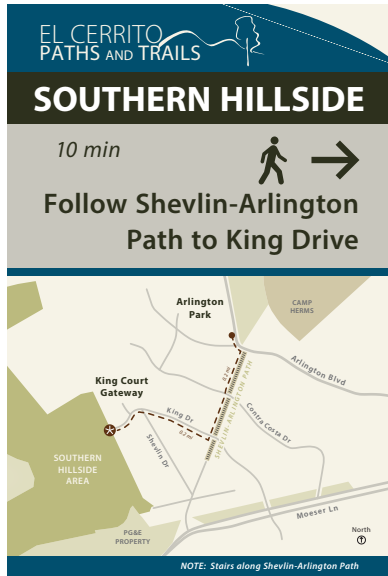


NOTE: Locations approximate, subject to field verification and site conditions

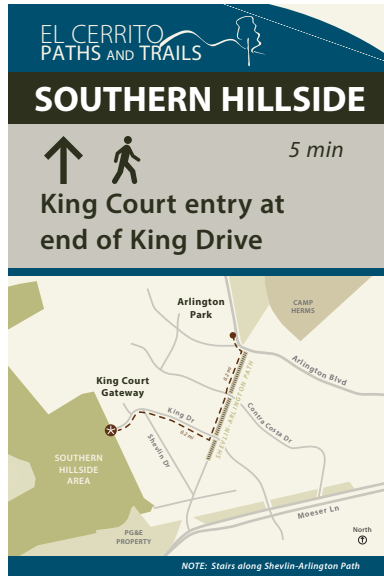
Signs link Arlington Park to the Hillside Natural Area King Court Gateway via the Shevlin to Arlington Path. The O-S3-6.1 sign marks each entry point of the Shevlin to Arlington Path, except the southern most entry where sign S4-6.2 marks the trail. The O-S4-6.1 sign is situated at the southern end of Arlington Park to increase awareness of the nearby trail and King Court Gateway entry to the Hillside Natural Area. All signs include a map of the area highlighting the trail link and surrounding resources.



O-S3-6.1



O-S4-6.1



O-S4-6.2

References

City of El Cerrito Community Development Department. June 2015. *City of El Cerrito Urban Greening Plan, Final Draft, June 16th, 2016*. Prepared by MIG.

City of El Cerrito Public Works Department. July 2008. *The City of El Cerrito Signage & Wayfinding Program, Graphic Standards Manual, Release 1.0 / 07.14.2008*. Prepared by Studio L'Image.

City of El Cerrito Public Works and Community Development Departments. August 2015. *El Cerrito Active Transportation Plan*. Available on the Internet: <http://ca-elcerrito.civicplus.com/index.aspx?nid=638>.

West Contra Costa Transportation Advisory Committee. October 2011. *West Contra Costa Transit Enhancement Strategic Plan and West Contra Costa/Albany Transit Wayfinding Plan*. Prepared by Fehr & Peers.

Appendix: Cost Estimation

Provided for general reference. Figures are based on similar sign type fabrication and installation in other locations. Actual costs will vary based on exact installation conditions and final sign specifications.

PROJECT ELEMENT		UNIT COST
S1	Gateway Kiosk Powder-coated aluminum posts, pre-designed graphic informational display panel, 1/2" thick high pressure laminate (or similar)	\$2000.00
	Gateway Kiosk Nameplate Corten steel, laser cut lettering and logo	\$750.00
	Gateway Kiosk Labor Footings, etc.	\$500.00
	Gateway Kiosk Unit Cost	\$3250.00
S2	Trail Entry Sign Post	\$75.00
	Trail Entry Sign Single-sided aluminum panel printing	\$300.00
	Trail Entry Sign Labor	\$200.00
	Trail Entry Sign Unit Cost	\$575.00
S3	Trail Directional Marker Powder-coated aluminum posts, up to 2 markers per sign post	\$500.00
	Trail Directional Marker Labor	\$100.00
	Trail Directional Marker Unit Cost	\$600.00
S4	Street Directional Sign Post	\$75.00
	Street Directional Sign Single-sided aluminum panel printing	\$170.00
	Street Directional Sign Labor	\$125.00
	Street Directional Sign Unit Cost	\$370.00

